

# LOMBARD BASEBALL LEAGUE

## FALL SEASON FIELD LOCATIONS

All fields are located with-in blocks of Roosevelt Rd. (IL Rt. #38).

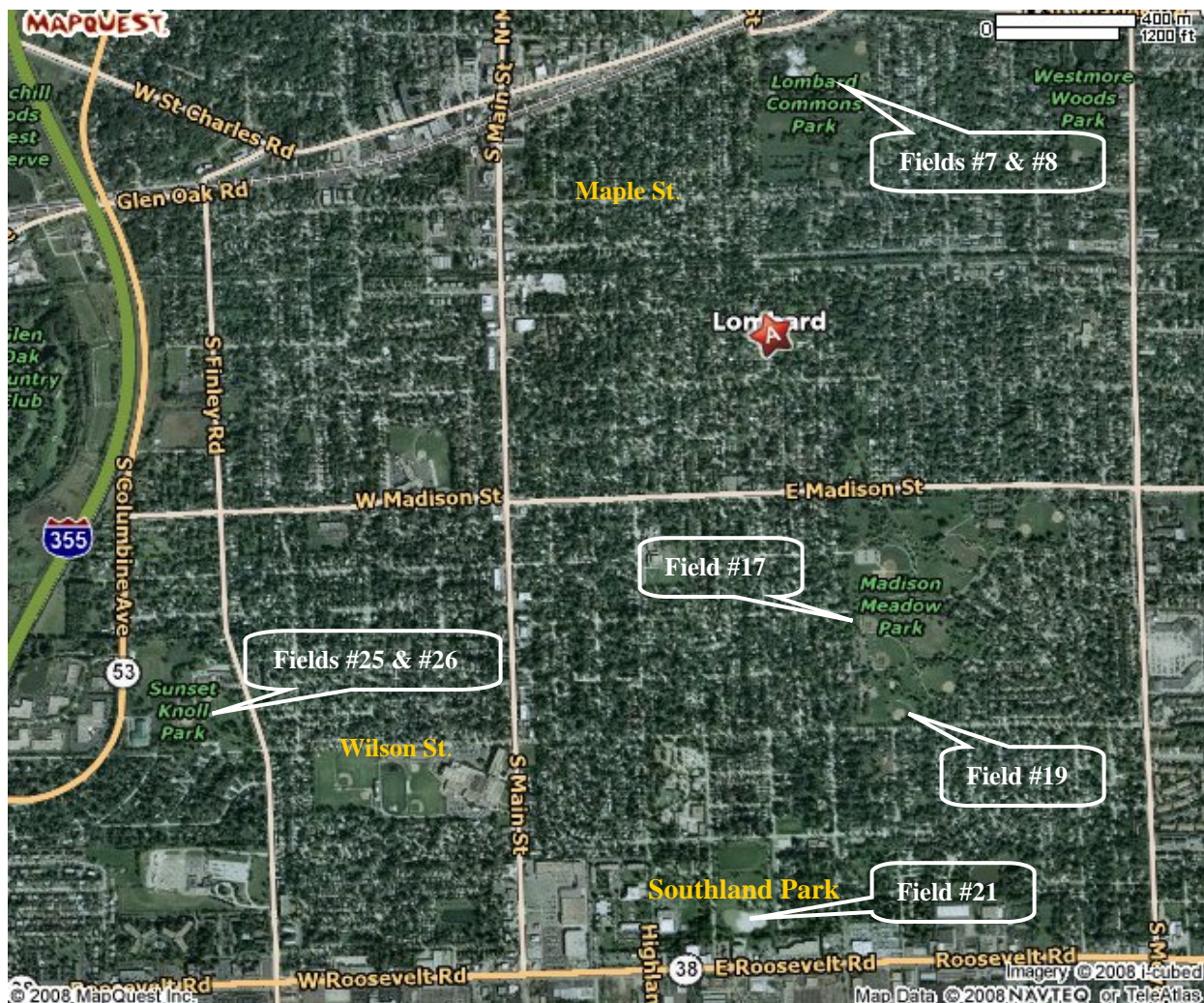
**FIELDS #17 & #19 - MADISON MEADOW PARK - WILSON ST. & FAIRFIELD AV.**  
Roosevelt Rd. to Main Street. North on Main St. to Wilson St. East on Wilson St. to park.

**FIELDS #25 & #26 - SUNSET KNOLLS PARK -, WILSON ST. & FINLEY RD.**  
Roosevelt Rd. to Finley Road. North on Finley to Wilson Street. Turn Left into parking lot.

**FIELD #21 - SOUTHLAND PARK - GRACE ST. & CENTRAL AVE.**  
Roosevelt Rd. to Main Street. North on Main St. to Wilson. East on Wilson to Grace St.  
Turn Right on Grace St. to field.

**FIELDS #7 & #8 - LOMBARD COMMONS PARK – MAPLE ST. & EDGEWOOD AVE.**  
Roosevelt Rd. to Main Street. North on Main St. to Maple Street. East on Maple to Edgewood.  
North on Edgewood to fields on left hand side of street.

### Lombard Field Map



# VILLAGE GREEN PARK

## LAMBERT ROAD

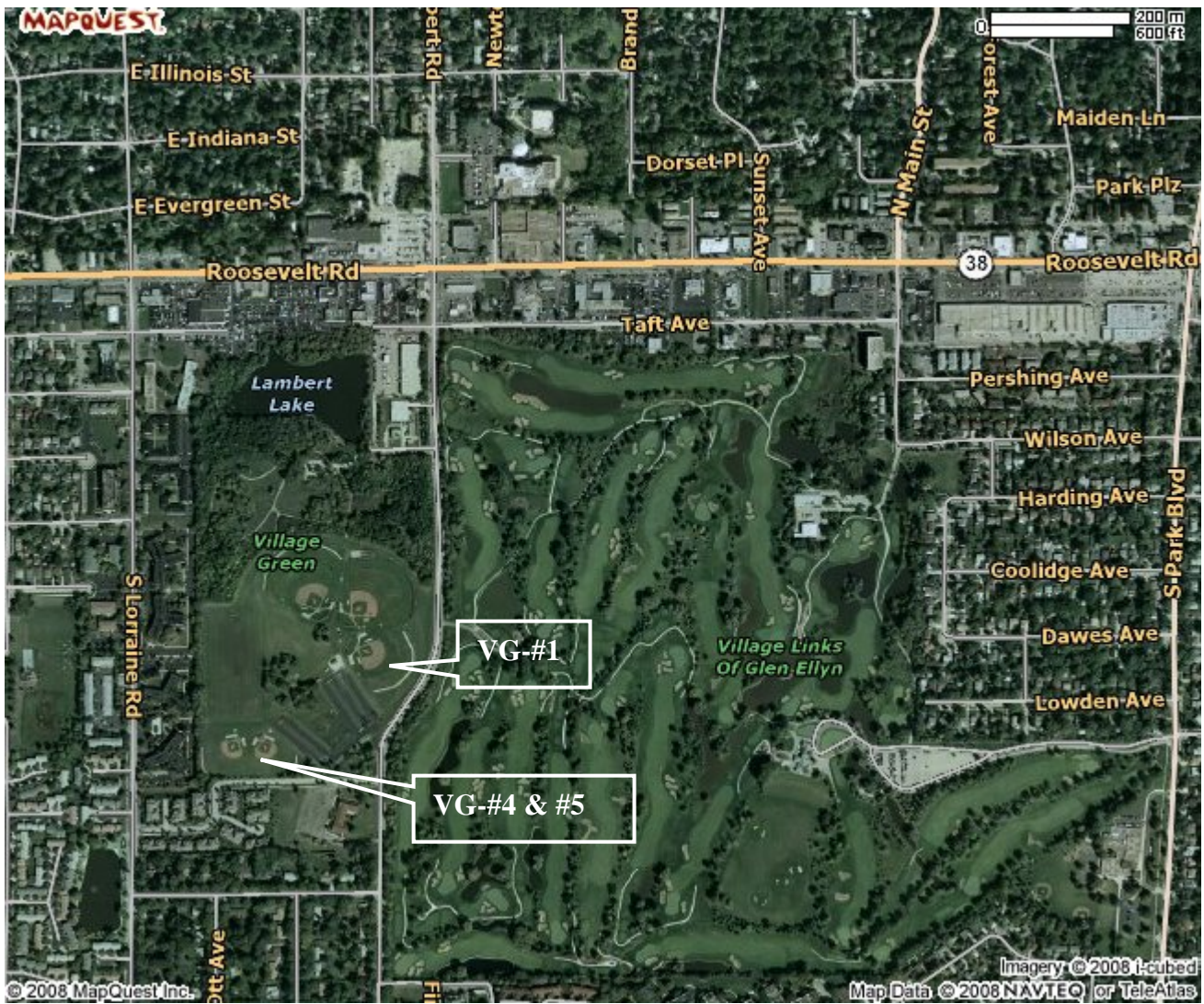
### GLEN ELLYN, IL

Directions: Roosevelt Road West to Lambert Road. Turn left (South) to park.

Entrance is on the west side of Lambert Road.

## FIELD MAP

North



South

**Newton Park  
Nicoll Way & DuPage Blvd.  
Glen Ellyn, IL**

**Directions: Rt. 53 South to DuPage Blvd. Turn right (West) to park.  
Or Roosevelt Rd. West to Nicoll Way. Turn right (North) to park.**

**North**



**South**